

NEWSLETTER

OCTOBER 2023



KINNEY 4-H



General 4-H Meeting
Monday, OCTOBER 23

6:00 pm - Extension Office

Officers come at 5:30 to
help set up for the meeting.

REMINDERS

4-H Enrollment Fee is \$25
After Oct. 30 - \$ 30
<https://4honline.com/>

Swine Validation by
appointment week of
Nov. 13th - 17th

**HUNTERS
ROUNDUP
NOV. 4**

KCJLS
ENTRY DEADLINE DEC. 8
\$10 an entry
\$20 late fee



4-H Shooting Range Cleanup Look what they got done in One Day!





4-H Projects

ARCHERY



Archery is practicing on Mondays. Be sure to join their REMIND group for practice day reminders. Text @7h67h37 to 81010. You must be enrolled in 4-H at 4honline.com and have a Safety Training Class before you can practice in Archery. Call 830-563-2442 if you have questions.



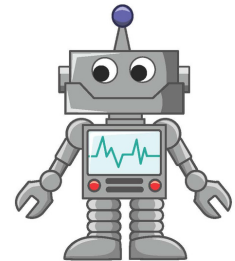
SHOOTING SPORTS



Shooting Sports practice started out last Sunday, Oct. 15. You must have a Safety Training Class and be enrolled in 4-H on 4honline.com before you can begin practice.

Get on the SS REMIND group for updates on practice. Text @dehk6e to 81010.

ROBOTICS



Dog Project coming soon.

DUDS TO DAZZLE & FOOD CHALLENGE

We need more members to make a FOOD CHALLENGE TEAM. If you are interested come to the meeting on Monday, Oct 16 at 4:00 pm. To join this REMIND group, Text @de8fkc2 to 81010.

DUDS TO DAZZLE meets at 5:00 pm on the same day as the Food Group. To join this REMIND group, Text @de8fkc2 to 81010.



You must be have passing grades to participate in Kinney County Jr. Livestock Show, Major Stock Shows and District/State Contests for all projects.

Kinney County Jr. Livestock Show will use the grades from 2nd Six Weeks (November 2nd) for Academic Eligibility to Show.

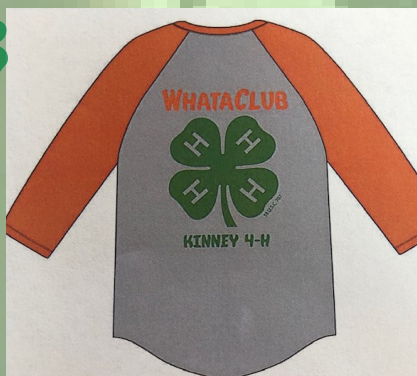
SHEEP & GOAT SHOW CLINIC
Planned for November

RABBIT SHOWMANSHIP
Planned for January

Major Stock Show
Sign-ups

November 6-8

Forms are ready to pick up.
Payment must accompany entries. You will need a Quality Counts number.



We have a limited number of our club shirts left! Get yours at the 4-H meeting for \$18.



RABBIT MEAT PENS

There is still one pen of rabbits left for \$290. It will be delivered the 1st week of December. Meat Pen validation is Dec. 13.



January 12-13, 2024

Kinney County Jr. Livestock Show

County entry forms are ready!

KCJLS is \$10 an entry.

Deadline is Dec. 8.

**Late fee of \$20 will be
accessed Dec. 8 to Dec. 15.**

No entries after Dec. 15.

**Senior scholarship
applications are due
by Dec. 15.**

2024 Major Livestock Show Schedule

Fort Worth Stock Show ~~~Jan. 12 to Feb. 3, 2024

Hill District Grandstand Show -- Kerrville ~~~Jan. 12 to Jan. 20, 2024

San Angelo Stock Show ~~~Feb. 1 to -Feb. 18, 2024

San Antonio Stock Show ~~~Feb. 8-25, 2024

Houston Livestock Show ~~~Feb. 27 -- Mar. 17, 2024

Austin Stock Show ~~~Mar. 8-23, 2024

This information is for reference only! Double check details of each show.
You can also check information online at web sites listed below.

Fort Worth - www.fwssr.com

Kerrville - <https://thegrandstand21.wixsite.com/2021>

San Angelo - www.sanangelorodeo.com

San Antonio - www.sarodeo.com

Houston - www.rodeohouston.com

Austin - www.rodeoaustin.com



Fall Heifers validation - Oct. 20

Sheep and Goat Validation - Completed

Swine Validation - Nov. 13th week

Rabbit Meat Pens - Dec. 13

Breeder Rabbits - Completed

Steers and Fall Heifers - Completed

Your animal projects must come to validation to be able to show at County and you must have State validation tags to be able to show at the Majors outside of County. County ear tags are \$5 each.

**Want to learn more about: Beef Cattle,
Goats, Sheep, Swine, Horses, Poultry,
and Rabbits? Check out**

www.texasyouthlivestock.com

and scroll down to:

What is your area of Interest?

Off to the Races

SAVE THE DATE



KCJLS Scholarship GALA


SATURDAY NOVEMBER 18, 2023

6 PM, Live Music by Gabe Garcia, Grand Prize drawing,
Live Auction and much more! Join us for a great time!



No tickets will be sold the door.

HUNTERS ROUNDUP



Kinney 4-H'ers in 7th through
12th grade are needed to work
round tables on
Saturday, November 4th
between 7 and 10 pm.
Wear a 4-H shirt!
Call 563-2442 to get your
name on the list!

Adults are needed to help in the kitchen and to supervise our 4-H'ers.

HUNTERS ROUNDUP

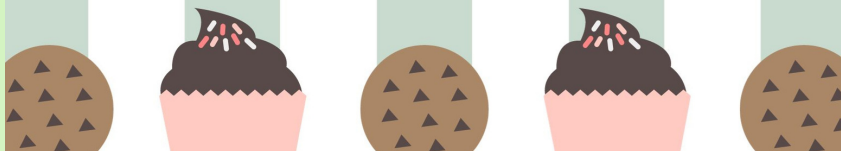
KINNEY 4-H Bake Sale

NOVEMBER 4, 2023
KINNEY COUNTY CIVIC CENTER
FROM 7:00 PM TO 10:00 PM

Sign up to work in the 4-H booth! We need whole cakes, pies, cupcakes (labeled as to what they are) and/or individually wrapped brownies, cookies, rice krispy treats, etc.

Make your treats look nice to sell in something you don't mind going to the person who buys them!

Email questions to: kinney@ag.tamu.edu or call: 830-563-2442



Learn about Quality Counts and Livestock Validation, Major Stock Shows, and explore the project books that are available. Under RESOURCES you will find: livestock project videos, worksheets to help firsttimers and more!

If you are purchasing State Validation tags for your Sheep, Goats, and/or Swine and plan on showing at Major shows outside of County. You will need a Quality Counts number. If you already have one and need to earn the next age level, following the guidelines below or call the office for help!

GET YOUR NUMBER BY NOVEMBER 6



Quality Counts FAQ - Students/Parents

Registration/Access

- How do I access the new Quality Counts system?
 - The new Quality Counts program can be found at: <https://agrillifelearn.tamu.edu/s/product/quality-counts/01t4x000002ciQSAAY>

Helpful Hint: Follow the Enrollment Instructions!

- Can I use the same email address as my sibling to take Quality Counts?
 - No, each individual exhibitor must have their own email address to use for registration.
- I took Quality Counts previously (last year, for example). Do I have to take it again?
 - If you are planning to show at Spring major livestock shows (or other county/local shows that indicate), Quality Counts verification is required.
- I will probably only show through 4-H (or FFA), but I am also a member of the other organization, which should I select?
 - Select both 4-H and FFA, as applicable. It is best to have both selected just in case! Keep in mind, 4-H affiliation is by county, not individual clubs.

Helpful Hint: Exhibitors must be verified once as a junior (grades 3-5), once as an intermediate (grades 6-8) and once as a senior (grades 9-12).

Quality Counts Verification

- Which shows require Quality Counts verification?
 - Verification on the Quality Counts system is required for all major livestock show entries. Additionally, county and local shows may require Quality Counts numbers. Please refer to each show's rules to determine if Quality Counts verification is required for show or contest participation.
- I did not get a certificate to print when I finished Quality Counts. How do I prove I am verified?
 - Quality Counts no longer provides a certificate to print. You received an email confirmation from texasyouthlivestock@ag.tamu.edu upon your completion. This can be kept for your records to confirm verification.
- I did not receive the confirmation email. What do I do?
 - The emails are automatic and cannot be resent. Please check your spam folders. You may contact your County Extension Agent or Ag Science Teacher for the number if you did not receive the email



KINNEY 4-H OFFICERS

*** Officers are expected to attend all 4-H meetings, events, fundraisers, activities, etc.**

***WILL LEWIS**--President will prepare the agenda with the Extension Office and club manager, arrange programs and activities, and run meetings.

***CAYDIE CASTRO**--Vice President will help plan activities, and help recruit new members.

***CARALINE DUCHARME**--Secretary keeps attendance, prepares the minutes for every meeting, keeps a record of them, and turns in a copy to the office.

***DIEGO REYES**--Reporter is expected to take pictures of 4-H happenings and submit all 4-H newspaper articles through the Extension office.

***JACK LEWIS**--Treasurer is expected to meet with the 4-H book keeper and prepare the treasurer report for the monthly meetings.

Junior Council Delegate -- **NATALIA SANDOVAL**
Intermediate Council Delegate--**CALLIE HARRIS**
Senior Council Delegate--**MADELEINE DUCHARME**
Delegates are expected to attend events outside of County & bring back what they learn to their club.

Club Managers: Cherrise Ducharme & Cindie Castro

County Support Staff: Kathryn Gose
Extension Agent: Bret Allen



<https://www.facebook.com/KinneyExtension/>

THE KINNEY 4-H FACEBOOK
GROUP ADDRESS IS:
[HTTPS://WWW.FACEBOOK.COM/GROUPS/183035718927980](https://www.facebook.com/groups/183035718927980)



Text @kinney4h To: 81010



KINNEY COUNTY
AGRICULTURE
CENTER

<http://kinney.agrilife.org/>

CONTACT INFORMATION



Kinney-Texas A&M AgriLife Extension Office
Mailing address--P.O. Box 266 Physical address--117 Ranch Road 693
Brackettville, TX 78832 830-563-2442 email: kinney@ag.tamu.edu



"The members of Texas A&M AgriLife will provide equal opportunities in programs and activities, education, and employment to all persons regardless of race, color, sex, religion, national origin, age, disability, genetic information, veteran status, sexual orientation or gender identity and will strive to achieve full and equal employment opportunity throughout Texas A&M AgriLife."